

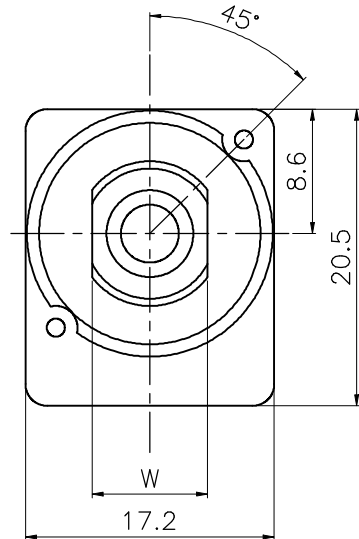
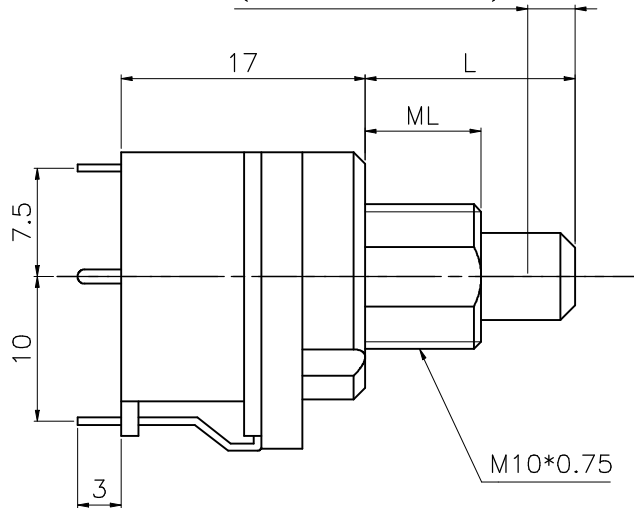
REV. B

MODEL: R16P□S-□D1

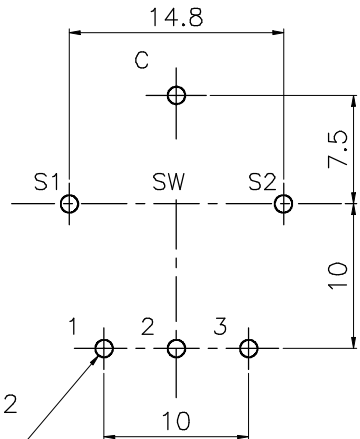
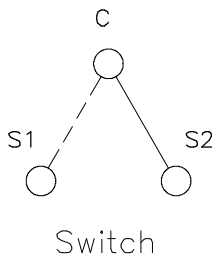
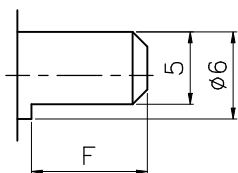
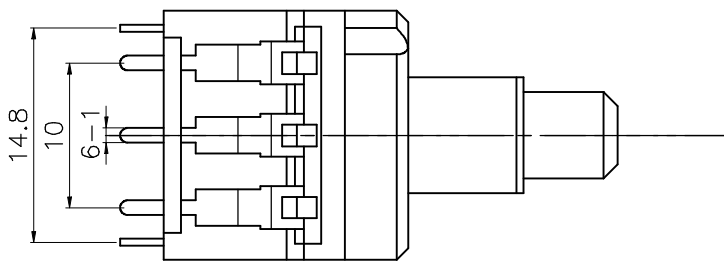
W X

| | | | | | | | |
|-----------------|-------|---------|-------|---------|-------|---------|----|
| W | 1 | 2 | 3 | 4 | 5 | 6 | 7 |
| Shaft Materials | BRASS | PLASTIC | BRASS | PLASTIC | BRASS | PLASTIC | AL |
| ML | 8 | 8 | 9 | 9 | 10.5 | 10.5 | 8 |
| W | 8 | 8 | 9 | 9 | 8 | 8 | 8 |

(PUSH TRAVEL=3.3)

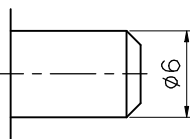


shaft shown in full C.C.W. position



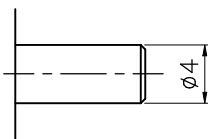
F TYPE

| | | | |
|---|----|------|----|
| X | 2 | 5 | 8 |
| L | 19 | 21.5 | 15 |
| F | 8 | 8 | 4 |



S TYPE

| | | |
|---|----|------|
| X | 3 | 7 |
| L | 23 | 14.5 |



S4 TYPE

| | | |
|---|----|----|
| X | A | B |
| L | 18 | 20 |

MODEL: R16P□S

Mechanical characteristics:機械的性能:

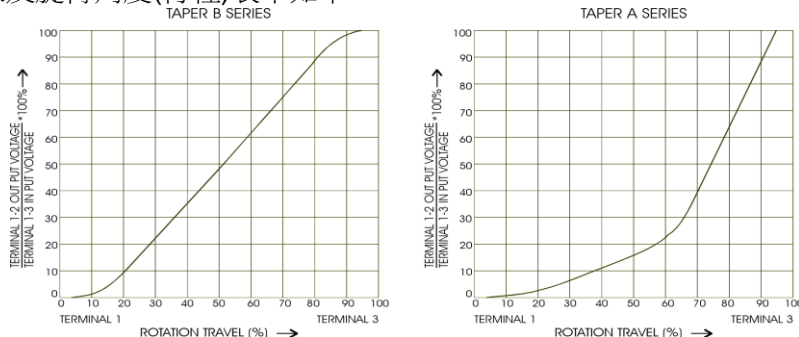
| Item<項目> | Performance<性能> |
|---|--|
| Total rotational angle/travel 全迴轉角度/行程 | 270°±5° |
| Rotation torque 迴轉扭力 | 10~100 gf-cm |
| Shaft rotational stopper strength 軸的止迴轉強度 | Brass shaft : 5 kgf-cm Plastic shaft : 4 kgf-cm |
| Push-pull strength 軸推拉強度 | 8 kgf |
| Click position C.C.位置 | 16 Click |

Electrical characteristics:電氣的性能:

| Item<項目> | Performance<性能> |
|-----------------------|-----------------|
| Resistance taper 阻值線性 | A/B |

Reference: Standard resistance tapers in reference to rotational angles(travel) are as shown below:

參考:標準阻值曲線及旋轉角度(行程)表示如下:



| | |
|-----------------------------------|---|
| Total resistance 總阻值 | 5KΩ~1MΩ |
| Total resistance tolerance 總阻值容許差 | ±20% (more than 1MΩ±30%) |
| Max. operating voltage 最高使用電壓 | B curve:200V Other than B curve:150V |
| Switch working voltage 開關功率 | 250V AC , 10A |
| Rated power 定格電力 | B curve:0.2W Other than B curve:0.05W |
| Residual resistance 殘留阻值 | $R \geq 250K\Omega$ 0.1% max. of total resistance $250K\Omega > R > 10K\Omega$ 20Ω max. $10K\Omega \geq R$ 10Ω max. |
| Withstand voltage 耐電壓 | 1000 V AC (1 minute) |
| Rotational/sliding noise 迴轉/滑動雜音 | Less than 100mV |
| Insulation resistance 絕緣抵抗 | More than 100MΩ at DC 250V |
| Manual Soldering heat 手焊錫溫度 | Below 300°C, Less than 3 seconds. |

Durability:耐久的性能:

| Item<項目> | Performance<性能> |
|---------------------------------|-----------------|
| Rotational/sliding life 迴轉/滑動壽命 | 15,000 cycles |
| Switch life 開關壽命 | 6,000 cycles |